

Certificate of Analysis

For R&D Use Only - Not a California Compliance Certificate.

G'mint Oasis

Client: AAA Distribution

Total CBD	ND
Total THC	27.44 %
Total Cannabinoids	31.26 %



Sample Name:

G'mint Oasis

Matrix:

Plant

Unit Mass:


1 g per unit

Sample ID:

47540124-1

Date Received:

1/24/2024



Approved By:

Marie True, M.S.

Laboratory Manager

This certificate of analysis is responsible for the tested sample only and is for research and development (R&D) use only. This certificate of analysis shall not be reproduced, except in its entirety, without the written approval of FESA Labs. FESA Labs shall not be liable for any damage that may result from the data contained herein in any way. FESA Labs makes no claim to the efficacy, safety or other risks associated with any detected or non-detected amounts of any substances reported herein. If there are any questions with this report please email info@fesalabs.com. This certificate of analysis is intended only for the use of the party to whom it is addressed and may contain information that is confidential or protected from disclosure under applicable law. If you have received this document in error, please immediately contact us.

References: limit of detection (LOD), limit of quantitation (LOQ), not detected (ND), not tested (NT)

Certificate of Analysis

For R&D Use Only - Not a California Compliance Certificate.

Cannabinoid Analysis

Complete

Analyte	LOD (%)	LOQ (%)	Mass (%)	Mass (mg/g)
CBDV	0.0035	0.011	ND	ND
CBD	0.0030	0.0090	ND	ND
CBG	0.0038	0.011	ND	ND
CBDA	0.0017	0.0052	ND	ND
CBN	0.00080	0.0024	ND	ND
Delta 9-THC	0.0022	0.0067	0.18	1.82
Delta 8-THC	0.0020	0.0059	ND	ND
CBC	0.00070	0.0021	ND	ND
THCA	0.0024	0.0073	31.08	310.83
Total CBD			ND	ND
Total THC			27.44	274.41
Total Cannabinoids			31.26	312.64

Date Tested: 1/26/2024

Total THC = THCa * 0.877 + d9-THC + d8-THC

Total CBD = CBDa * 0.877 + CBD

Method References:

Testing Location

Cannabinoid Profile (UNODC)

FESA Labs - Santa Ana, CA

Official Methods of Analysis, Method 2018.11.AOAC INTERNATIONAL (modified), Lukas Vaclavik, Frantisek Benes, Alex Krmela, Veronika Svobodova, Jana Hajsolva, and Katerina Mastovska, "Quantification of Cannabinoids in Cannabis Dried Plant Materials, Concentrates, and Oils Liquid Chromatography-Diode Array Detection Technique with Optional Mass Spectrometric Detection," First Action Method, Journal of AOAC International, Future Issue

United Nations Office on Drugs and Crime - Recommended methods for identification and analysis of cannabis and cannabis products

Testing Location:

FESA Labs
2002 S. Grand Ave., Suite A
Santa Ana, CA 92705
(714) 540-0172
www.fesalabs.com

Certificate of Analysis

For R&D Use Only - Not a California Compliance Certificate.

Garlic Glaze

Client: AAA Distribution

Total CBD	ND
Total THC	22.81 %
Total Cannabinoids	25.99 %



Sample Name:

Garlic Glaze

Matrix:

Plant

Unit Mass:

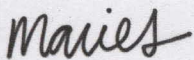
1 g per unit

Sample ID:

47540124-6

Date Received:

1/24/2024



Approved By:

Marie True, M.S.

Laboratory Manager

This certificate of analysis is responsible for the tested sample only and is for research and development (R&D) use only. This certificate of analysis shall not be reproduced, except in its entirety, without the written approval of FESA Labs. FESA Labs shall not be liable for any damage that may result from the data contained herein in any way. FESA Labs makes no claim to the efficacy, safety or other risks associated with any detected or non-detected amounts of any substances reported herein. If there are any questions with this report please email info@fesalabs.com. This certificate of analysis is intended only for the use of the party to whom it is addressed and may contain information that is confidential or protected from disclosure under applicable law. If you have received this document in error, please immediately contact us.

References: limit of detection (LOD), limit of quantitation (LOQ), not detected (ND), not tested (NT)

Certificate of Analysis

For R&D Use Only - Not a California Compliance Certificate.

Cannabinoid Analysis

Complete

Analyte	LOD (%)	LOQ (%)	Mass (%)	Mass (mg/g)
CBDV	0.0035	0.011	ND	ND
CBD	0.0030	0.0090	ND	ND
CBG	0.0038	0.011	ND	ND
CBDA	0.0017	0.0052	ND	ND
CBN	0.00080	0.0024	ND	ND
Delta 9-THC	0.0022	0.0067	0.079	0.79
Delta 8-THC	0.0020	0.0059	ND	ND
CBC	0.00070	0.0021	ND	ND
THCA	0.0024	0.0073	25.92	259.16
Total CBD			ND	ND
Total THC			22.81	228.07
Total Cannabinoids			25.99	259.95

Date Tested: 1/26/2024

Total THC = THCa * 0.877 + d9-THC + d8-THC

Total CBD = CBDA * 0.877 + CBD

Method References:

Testing Location

Cannabinoid Profile (UNODC)

FESA Labs - Santa Ana, CA

Official Methods of Analysis, Method 2018.11.AOAC INTERNATIONAL (modified), Lukas Vaclavik, Frantisek Benes, Alex Krmela, Veronika Svobodova, Jana Hajsolva, and Katerina Mastovska, "Quantification of Cannabinoids in Cannabis Dried Plant Materials, Concentrates, and Oils Liquid Chromatography-Diode Array Detection Technique with Optional Mass Spectrometric Detection," First Action Method, Journal of AOAC International, Future Issue

United Nations Office on Drugs and Crime - Recommended methods for identification and analysis of cannabis and cannabis products

Testing Location:

FESA Labs
2002 S. Grand Ave., Suite A
Santa Ana, CA 92705
(714) 540-0172
www.fesalabs.com

Certificate of Analysis

For R&D Use Only - Not a California Compliance Certificate.

Grease Monkey

Client: Appalachian Natural

Total CBD	ND
Total THC	23.34 %
Total Cannabinoids	26.57 %



Sample Name:
Grease Monkey

Matrix:
Plant

Unit Mass:
1 g per unit

Sample ID:
47340123-4

Date Received:
1/23/2024

Marie
Approved By:
Marie True, M.S.
Laboratory Manager

This certificate of analysis is responsible for the tested sample only and is for research and development (R&D) use only. This certificate of analysis shall not be reproduced, except in its entirety, without the written approval of FESA Labs. FESA Labs shall not be liable for any damage that may result from the data contained herein in any way. FESA Labs makes no claim to the efficacy, safety or other risks associated with any detected or non-detected amounts of any substances reported herein. If there are any questions with this report please email info@fesalabs.com. This certificate of analysis is intended only for the use of the party to whom it is addressed and may contain information that is confidential or protected from disclosure under applicable law. If you have received this document in error, please immediately contact us.

References: limit of detection (LOD), limit of quantitation (LOQ), not detected (ND), not tested (NT)

Certificate of Analysis

For R&D Use Only - Not a California Compliance Certificate.

Cannabinoid Analysis

Complete

Analyte	LOD (%)	LOQ (%)	Mass (%)	Mass (mg/g)
CBDV	0.0035	0.011	ND	ND
CBD	0.0030	0.0090	ND	ND
CBG	0.0038	0.011	ND	ND
CBDA	0.0017	0.0052	ND	ND
CBN	0.00080	0.0024	ND	ND
Delta 9-THC	0.0022	0.0067	0.26	2.63
Delta 8-THC	0.0020	0.0059	ND	ND
CBC	0.00070	0.0021	ND	ND
THCA	0.0024	0.0073	26.31	263.08
Total CBD			ND	ND
Total THC			23.34	233.35
Total Cannabinoids			26.57	265.71

Date Tested: 1/24/2024

Total THC = THCa * 0.877 + d9-THC + d8-THC

Total CBD = CBDa * 0.877 + CBD

Method References:

Testing Location

Cannabinoid Profile (UNODC)

FESA Labs - Santa Ana, CA

Official Methods of Analysis, Method 2018.11.AOAC INTERNATIONAL (modified), Lukas Vaclavik, Frantisek Benes, Alex Krmela, Veronika Svobodova, Jana Hajsolva, and Katerina Mastovska, "Quantification of Cannabinoids in Cannabis Dried Plant Materials, Concentrates, and Oils Liquid Chromatography-Diode Array Detection Technique with Optional Mass Spectrometric Detection," First Action Method, Journal of AOAC International, Future Issue

United Nations Office on Drugs and Crime - Recommended methods for identification and analysis of cannabis and cannabis products

Testing Location:

FESA Labs
2002 S. Grand Ave., Suite A
Santa Ana, CA 92705
(714) 540-0172
www.fesalabs.com

Certificate of Analysis

For R&D Use Only - Not a California Compliance Certificate.

Ice Pop

Client: Appalachian Natural

Total CBD

ND

Total THC

23.55 %

Total Cannabinoids

26.82 %



Sample Name:

Ice Pop

Matrix:

Plant

Unit Mass:

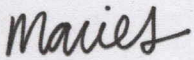
1 g per unit

Sample ID:

47340123-5

Date Received:

1/23/2024



Approved By:

Marie True, M.S.

Laboratory Manager

This certificate of analysis is responsible for the tested sample only and is for research and development (R&D) use only. This certificate of analysis shall not be reproduced, except in its entirety, without the written approval of FESA Labs. FESA Labs shall not be liable for any damage that may result from the data contained herein in any way. FESA Labs makes no claim to the efficacy, safety or other risks associated with any detected or non-detected amounts of any substances reported herein. If there are any questions with this report please email info@fesalabs.com. This certificate of analysis is intended only for the use of the party to whom it is addressed and may contain information that is confidential or protected from disclosure under applicable law. If you have received this document in error, please immediately contact us.

References: limit of detection (LOD), limit of quantitation (LOQ), not detected (ND), not tested (NT)

Certificate of Analysis

For R&D Use Only - Not a California Compliance Certificate.

Cannabinoid Analysis

Complete

Analyte	LOD (%)	LOQ (%)	Mass (%)	Mass (mg/g)
CBDV	0.0035	0.011	ND	ND
CBD	0.0030	0.0090	ND	ND
CBG	0.0038	0.011	ND	ND
CBDA	0.0017	0.0052	ND	ND
CBN	0.00080	0.0024	ND	ND
Delta 9-THC	0.0022	0.0067	0.21	2.08
Delta 8-THC	0.0020	0.0059	ND	ND
CBC	0.00070	0.0021	ND	ND
THCA	0.0024	0.0073	26.61	266.11
Total CBD			ND	ND
Total THC			23.55	235.46
Total Cannabinoids			26.82	268.19

Date Tested: 1/24/2024

Total THC = THCa * 0.877 + d9-THC + d8-THC

Total CBD = CBDA * 0.877 + CBD

Method References:

Testing Location

Cannabinoid Profile (UNODC)

FESA Labs - Santa Ana, CA

Official Methods of Analysis, Method 2018.11.AOAC INTERNATIONAL (modified), Lukas Vaclavik, Frantisek Benes, Alex Krmela, Veronika Svobodova, Jana Hajsolva, and Katerina Mastovska, "Quantification of Cannabinoids in Cannabis Dried Plant Materials, Concentrates, and Oils Liquid Chromatography-Diode Array Detection Technique with Optional Mass Spectrometric Detection," First Action Method, Journal of AOAC International, Future Issue

United Nations Office on Drugs and Crime - Recommended methods for identification and analysis of cannabis and cannabis products

Testing Location:

FESA Labs
2002 S. Grand Ave., Suite A
Santa Ana, CA 92705
(714) 540-0172
www.fesalabs.com

Certificate of Analysis

For R&D Use Only - Not a California Compliance Certificate.

Oppenheimer

Client: Dandy Farms



Analysis	LOD (µg)	LOQ (µg)	Result
CBDV	0.0030	0.011	ND
CBD	0.0030	0.0090	ND
CBB	0.0030	0.017	ND
Total CBD	0.0073	0.0073	ND
Delta-9-THC	0.0025	0.0087	25.34 %
Delta-8-THC	0.0025	0.0025	25.34 %
CBC	0.0010	0.0031	28.86 %
Total Cannabinoids	0.0074	0.0074	28.86 %
Total THC		25.34	
Total Cannabinoids		28.86	

Sample Name:

Oppenheimer

Matrix:

Plant

Unit Mass:

1 g per unit

Sample ID:

47540223-2

Date Received:

2/23/2024

Marie True

Approved By:

Marie True, M.S.

Laboratory Manager

This certificate of analysis is responsible for the tested sample only and is for research and development (R&D) use only. This certificate of analysis shall not be reproduced, except in its entirety, without the written approval of FESA Labs. FESA Labs shall not be liable for any damage that may result from the data contained herein in any way. FESA Labs makes no claim to the efficacy, safety or other risks associated with any detected or non-detected amounts of any substances reported herein. If there are any questions with this report please email info@fesalabs.com. This certificate of analysis is intended only for the use of the party to whom it is addressed and may contain information that is confidential or protected from disclosure under applicable law. If you have received this document in error, please immediately contact us.

References: limit of detection (LOD), limit of quantitation (LOQ), not detected (ND), not tested (NT)

Certificate of Analysis

For R&D Use Only - Not a California Compliance Certificate.

Cannabinoid Analysis

Complete

Analyte	LOD (%)	LOQ (%)	Mass (%)	Mass (mg/g)
CBDV	0.0035	0.011	ND	ND
CBD	0.0030	0.0090	ND	ND
CBG	0.0038	0.011	ND	ND
CBDA	0.0017	0.0052	ND	ND
CBN	0.00080	0.0024	ND	ND
Delta 9-THC	0.0022	0.0067	0.235	2.35
Delta 8-THC	0.0020	0.0059	ND	ND
CBC	0.00070	0.0021	ND	ND
THCA	0.0024	0.0073	28.621	286.21
Total CBD			ND	ND
Total THC			25.34	253.36
Total Cannabinoids			28.86	288.57

Date Tested: 2/27/2024

Total THC = THCa * 0.877 + d9-THC + d8-THC

Total CBD = CBDa * 0.877 + CBD

Method References:

Testing Location

Cannabinoid Profile (UNODC)

FESA Labs - Santa Ana, CA

Official Methods of Analysis, Method 2018.11.AOAC INTERNATIONAL (modified), Lukas Vaclavik, Frantisek Benes, Alex Krmela, Veronika Svobodova, Jana Hajsolva, and Katerina Mastovska, "Quantification of Cannabinoids in Cannabis Dried Plant Materials, Concentrates, and Oils Liquid Chromatography-Diode Array Detection Technique with Optional Mass Spectrometric Detection," First Action Method, Journal of AOAC International, Future Issue

United Nations Office on Drugs and Crime - Recommended methods for identification and analysis of cannabis and cannabis products

Testing Location:

FESA Labs
2002 S. Grand Ave., Suite A
Santa Ana, CA 92705
(714) 540-0172
www.fesalabs.com

Sample Name

Operator

Method

Plan

Unit Mass

g per unit

Sample ID:

Date Received:

2/28/2024

Maria
Approved By:
Maria T. M. S.
Laboratory Manager

This certificate of analysis is responsible for the tested sample only and is for research and development (R&D) use only. This certificate of analysis shall not be reproduced, except in its entirety, without the written approval of FESA Labs. FESA Labs shall not be liable for any damage that may result from the data contained herein in any way. FESA Labs makes no claim to the effect of safety or other risks associated with any detected or non-detected amounts of any substances reported herein. If there are any questions with this report please email info@fesalabs.com. This certificate of analysis is intended only for the use of the party to whom it is addressed and may contain information that is confidential or protected from disclosure under applicable law. If you have received this document in error, please immediately contact us. Reference: limit of detection (LOD), limit of quantitation (LOQ), not tested (NT)

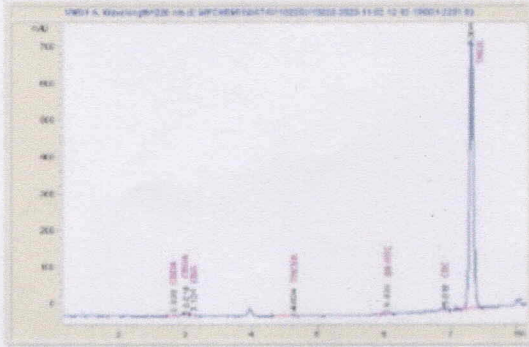


Sample Submitted: 11-02-2023; Report Date: 11-08-2023

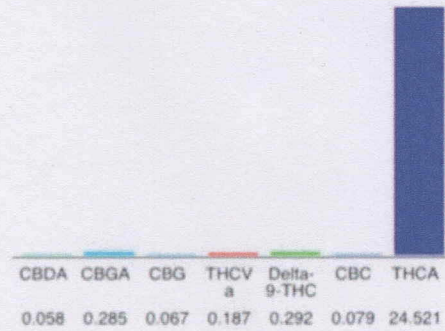
Orange 43 (THCA Hemp)

Plant Material: Hemp Flower

Chromatogram



Cannabinoid Profile



Cannabinoid Profile by HPLC

0.29%
Delta-9-THC

0.00%
CBD

25.49%
Total Cannabinoids

Cannabinoid	% wt	mg/g
CBDA	0.058	0.58
CBGA	0.285	2.85
CBG	0.067	0.67
THCVa	0.187	1.87
Delta-9-THC	0.292	2.92
CBC	0.079	0.79
THCA	24.52	245.21
Total Cannabinoids	25.49	254.9
Calculated Total THC	21.80	217.97
Calculated CBD Yield	0.05	0.51
Calculated Total THC = Delta-9-THC + 0.877 * THCA		
Calculated Maximum CBD Yield = CBD + 0.877 * CBDA		

Marin Analytics, LLC

250 Bel Marin Keys Blvd, Suite D4
Novato, CA 94949

833-321-TEST / info@marinanalytics.com

Mike Clemmons
Lab Manager

This sample has been tested by Marin Analytics, LLC using valid testing methodologies and a quality system. Values reported relate only to the sample tested. Marin Analytics, LLC makes no claims as to the efficacy, safety, or other risks associated with any detected or non-detected levels of any compounds reported herein. This Certificate shall not be reproduced except in full without the written approval of Marin Analytics, LLC. Copyright 2023 Marin Analytics, LLC All Rights Reserved.

Certificate of Analysis

For R&D Use Only - Not a California Compliance Certificate.

Papaya Punch

Client: Dandy Farms



Total CBD	ND
Total THC	24.87 %
Total Cannabinoids	28.35 %

Sample Name:
Papaya Punch

Matrix:
Plant

Unit Mass:
1 g per unit

Sample ID:
47540223-8

Date Received:
2/23/2024

Marie
Approved By:
Marie True, M.S.
Laboratory Manager

This certificate of analysis is responsible for the tested sample only and is for research and development (R&D) use only. This certificate of analysis shall not be reproduced, except in its entirety, without the written approval of FESA Labs. FESA Labs shall not be liable for any damage that may result from the data contained herein in any way. FESA Labs makes no claim to the efficacy, safety or other risks associated with any detected or non-detected amounts of any substances reported herein. If there are any questions with this report please email info@fesalabs.com. This certificate of analysis is intended only for the use of the party to whom it is addressed and may contain information that is confidential or protected from disclosure under applicable law. If you have received this document in error, please immediately contact us.

References: limit of detection (LOD), limit of quantitation (LOQ), not detected (ND), not tested (NT)

Certificate of Analysis

For R&D Use Only - Not a California Compliance Certificate.

Cannabinoid Analysis

Complete

Analyte	LOD (%)	LOQ (%)	Mass (%)	Mass (mg/g)
CBDV	0.0035	0.011	ND	ND
CBD	0.0030	0.0090	ND	ND
CBG	0.0038	0.011	ND	ND
CBDA	0.0017	0.0052	ND	ND
CBN	0.00080	0.0024	ND	ND
Delta 9-THC	0.0022	0.0067	0.069	0.69
Delta 8-THC	0.0020	0.0059	ND	ND
CBC	0.00070	0.0021	ND	ND
THCA	0.0024	0.0073	28.285	282.85
Total CBD			ND	ND
Total THC			24.87	248.74
Total Cannabinoids			28.35	283.53

Date Tested: 2/27/2024

Total THC = THCa * 0.877 + d9-THC + d8-THC

Total CBD = CBDa * 0.877 + CBD

Method References:

Testing Location

Cannabinoid Profile (UNODC)

FESA Labs - Santa Ana, CA

Official Methods of Analysis, Method 2018.11.AOAC INTERNATIONAL (modified), Lukas Vaclavik, Frantisek Benes, Alex Krmela, Veronika Svobodova, Jana Hajsolva, and Katerina Mastovska, "Quantification of Cannabinoids in Cannabis Dried Plant Materials, Concentrates, and Oils Liquid Chromatography-Diode Array Detection Technique with Optional Mass Spectrometric Detection," First Action Method, Journal of AOAC International, Future Issue

United Nations Office on Drugs and Crime - Recommended methods for identification and analysis of cannabis and cannabis products

Testing Location:

FESA Labs
2002 S. Grand Ave., Suite A
Santa Ana, CA 92705
(714) 540-0172
www.fesalabs.com

Certificate of Analysis

For R&D Use Only - Not a California Compliance Certificate.

Purple Gumbo

Client: AAA Distribution



Total CBD	ND
Total THC	24.94 %
Total Cannabinoids	28.41 %

Sample Name:

Purple Gumbo

Matrix:

Plant

Unit Mass:

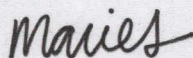
1 g per unit

Sample ID:

47540124-7

Date Received:

1/24/2024



Approved By:

Marie True, M.S.

Laboratory Manager

This certificate of analysis is responsible for the tested sample only and is for research and development (R&D) use only. This certificate of analysis shall not be reproduced, except in its entirety, without the written approval of FESA Labs. FESA Labs shall not be liable for any damage that may result from the data contained herein in any way. FESA Labs makes no claim to the efficacy, safety or other risks associated with any detected or non-detected amounts of any substances reported herein. If there are any questions with this report please email info@fesalabs.com. This certificate of analysis is intended only for the use of the party to whom it is addressed and may contain information that is confidential or protected from disclosure under applicable law. If you have received this document in error, please immediately contact us.

References: limit of detection (LOD), limit of quantitation (LOQ), not detected (ND), not tested (NT)

Certificate of Analysis

For R&D Use Only - Not a California Compliance Certificate.

Cannabinoid Analysis

Complete

Analyte	LOD (%)	LOQ (%)	Mass (%)	Mass (mg/g)
CBDV	0.0035	0.011	ND	ND
CBD	0.0030	0.0090	ND	ND
CBG	0.0038	0.011	ND	ND
CBDA	0.0017	0.0052	ND	ND
CBN	0.00080	0.0024	ND	ND
Delta 9-THC	0.0022	0.0067	0.15	1.54
Delta 8-THC	0.0020	0.0059	ND	ND
CBC	0.00070	0.0021	ND	ND
THCA	0.0024	0.0073	28.26	282.58
Total CBD			ND	ND
Total THC			24.94	249.36
Total Cannabinoids			28.41	284.12

Date Tested: 1/26/2024

Total THC = THCa * 0.877 + d9-THC + d8-THC

Total CBD = CBDA * 0.877 + CBD

Method References:

Testing Location

Cannabinoid Profile (UNODC)

FESA Labs - Santa Ana, CA

Official Methods of Analysis, Method 2018.11.AOAC INTERNATIONAL (modified), Lukas Vaclavik, Frantisek Benes, Alex Krmela, Veronika Svobodova, Jana Hajsolva, and Katerina Mastovska, "Quantification of Cannabinoids in Cannabis Dried Plant Materials, Concentrates, and Oils Liquid Chromatography-Diode Array Detection Technique with Optional Mass Spectrometric Detection," First Action Method, Journal of AOAC International, Future Issue

United Nations Office on Drugs and Crime - Recommended methods for identification and analysis of cannabis and cannabis products

Testing Location:

FESA Labs
2002 S. Grand Ave., Suite A
Santa Ana, CA 92705
(714) 540-0172
www.fesalabs.com

Certificate of Analysis

For R&D Use Only - Not a California Compliance Certificate.

Rainbow Sherb

Client: Appalachian Natural



Total CBD	ND
Total THC	24.41 %
Total Cannabinoids	27.82 %

Sample Name:
Rainbow Sherb

Matrix:
Plant

Unit Mass:
1 g per unit

Sample ID:
47340123-3

Date Received:
1/23/2024


Approved By:
Marie True, M.S.
Laboratory Manager

This certificate of analysis is responsible for the tested sample only and is for research and development (R&D) use only. This certificate of analysis shall not be reproduced, except in its entirety, without the written approval of FESA Labs. FESA Labs shall not be liable for any damage that may result from the data contained herein in any way. FESA Labs makes no claim to the efficacy, safety or other risks associated with any detected or non-detected amounts of any substances reported herein. If there are any questions with this report please email info@fesalabs.com. This certificate of analysis is intended only for the use of the party to whom it is addressed and may contain information that is confidential or protected from disclosure under applicable law. If you have received this document in error, please immediately contact us.

References: limit of detection (LOD), limit of quantitation (LOQ), not detected (ND), not tested (NT)

Certificate of Analysis

For R&D Use Only - Not a California Compliance Certificate.

Cannabinoid Analysis

Complete

Analyte	LOD (%)	LOQ (%)	Mass (%)	Mass (mg/g)
CBDV	0.0035	0.011	ND	ND
CBD	0.0030	0.0090	ND	ND
CBG	0.0038	0.011	ND	ND
CBDA	0.0017	0.0052	ND	ND
CBN	0.00080	0.0024	ND	ND
Delta 9-THC	0.0022	0.0067	0.10	0.99
Delta 8-THC	0.0020	0.0059	ND	ND
CBC	0.00070	0.0021	ND	ND
THCA	0.0024	0.0073	27.72	277.22
Total CBD			ND	ND
Total THC			24.41	244.11
Total Cannabinoids			27.82	278.21

Date Tested: 1/24/2024

Total THC = THCa * 0.877 + d9-THC + d8-THC

Total CBD = CBDA * 0.877 + CBD

Method References:

Testing Location

Cannabinoid Profile (UNODC)

FESA Labs - Santa Ana, CA

Official Methods of Analysis, Method 2018.11.AOAC INTERNATIONAL (modified), Lukas Vaclavik, Frantisek Benes, Alex Krmela, Veronika Svobodova, Jana Hajsolva, and Katerina Mastovska, "Quantification of Cannabinoids in Cannabis Dried Plant Materials, Concentrates, and Oils Liquid Chromatography-Diode Array Detection Technique with Optional Mass Spectrometric Detection," First Action Method, Journal of AOAC International, Future Issue

United Nations Office on Drugs and Crime - Recommended methods for identification and analysis of cannabis and cannabis products

Testing Location:

FESA Labs
2002 S. Grand Ave., Suite A
Santa Ana, CA 92705
(714) 540-0172
www.fesalabs.com



Appalachian Natural
Cannabis Co.

Sample 709-121923-006

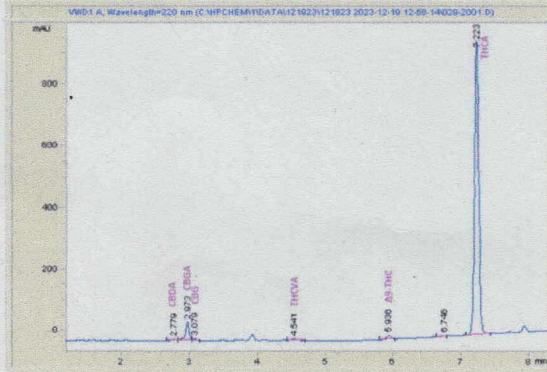
THCA Hemp Flower - Sugar Tarts

Sample Submitted: 12-19-2023; Report Date: 12-26-2023

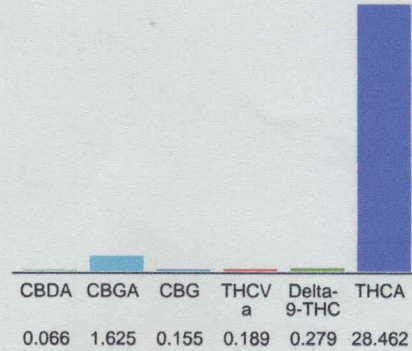
THCA Hemp Flower - Sugar Tarts

Plant Material: Hemp Flower

Chromatogram



Cannabinoid Profile



Cannabinoid Profile by HPLC

0.28%
Delta-9-THC

0.00%
CBD

30.78%
Total Cannabinoids

Cannabinoid	% wt	mg/g
CBDA	0.066	0.66
CBGA	1.625	16.25
CBG	0.155	1.55
THCVa	0.189	1.89
Delta-9-THC	0.279	2.79
THCA	28.46	284.62
Total Cannabinoids	30.78	307.8
Calculated Total THC	25.24	252.40
Calculated CBD Yield	0.06	0.58

Calculated Total THC = Delta-9-THC + 0.877 * THCA

Calculated Maximum CBD Yield = CBD + 0.877 * CBDA

Marin Analytics, LLC

250 Bel Marin Keys Blvd, Suite D4
Novato, CA 94949

833-321-TEST / info@marinanalytics.com

Mike Clemmons
Lab Manager

This sample has been tested by Marin Analytics, LLC using valid testing methodologies and a quality system. Values reported relate only to the sample tested. Marin Analytics, LLC makes no claims as to the efficacy, safety, or other risks associated with any detected or non-detected levels of any compounds reported herein. This Certificate shall not be reproduced except in full without the written approval of Marin Analytics, LLC. Copyright 2023 Marin Analytics, LLC All Rights Reserved.